



CADfix 10 Service Pack 2

January 2016

CADfix 10/SP2 Summary

- Import/Export
 - CAD version updates
 - Inventor 2016
 - New Creo export of .prt files
 - New PLMXML import
 - Import/Export of density
 - Import/Export of mixed units assemblies
 - New non-watertight option for STL/3DS
- Wizard
 - Improved smart healing
 - Repair splits complex torus faces
- Assemblies
 - Mixed units support added
- Morph
 - More robust mesh->Brep matching stage
- 3D Printing
 - Improved and more robust slicing
- Facets
 - Faster more robust facet generation
- Join/Split/Offset/Weld
 - Much improved Weld tool
- Build
 - Lofted surface creation now accepts guide rail curves
 - Improved creation of swept bodies
- GUI
 - New hidden part display mode
 - New “similar bodies” selection
 - Miscellaneous improvements
- CADfixForSOLAR
 - Numerous improvements
- Misc.
 - Cross platform .fbm support
 - Extended CFI api
 - Bugfixes.

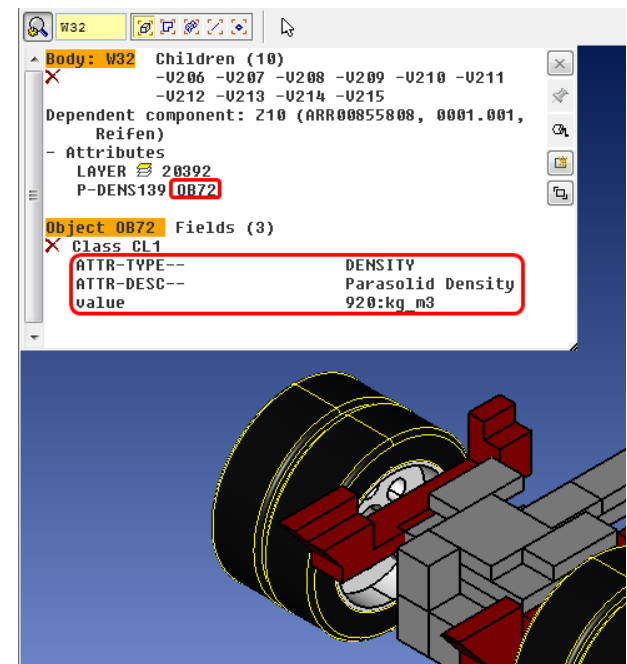
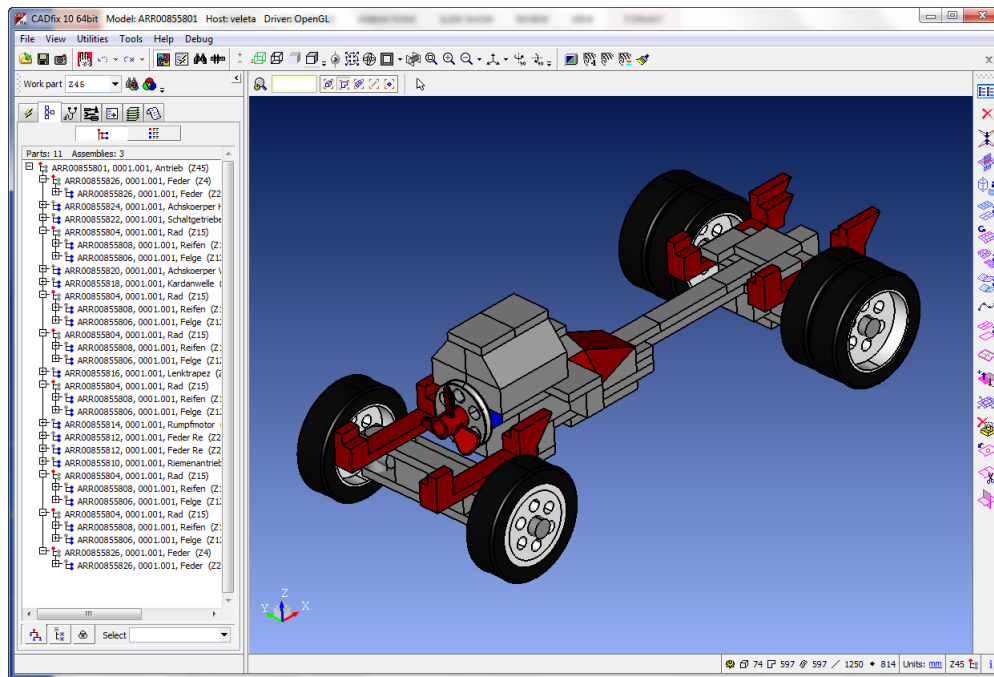
Import/Export

- CAD version updates
 - Inventor 2016
- Export of native Creo .prt files
 - Single parts can now be exported to native .prt files
- PLMXML support
 - New import of PLMXML assemblies
- Import/Export of density
 - Import from CATIA V5 and Creo
 - Export to JT and PLMXML
- STL Export
 - New option to relax watertight export checks
- Import of mixed unit assemblies
 - Mixed units preserved and exported (to STEP only)

PLMXML Import

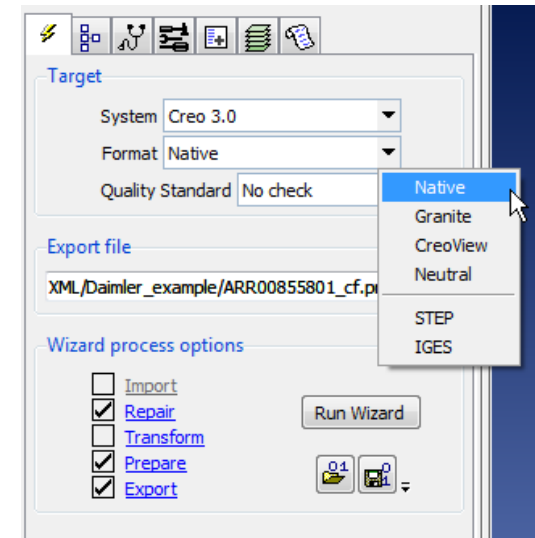
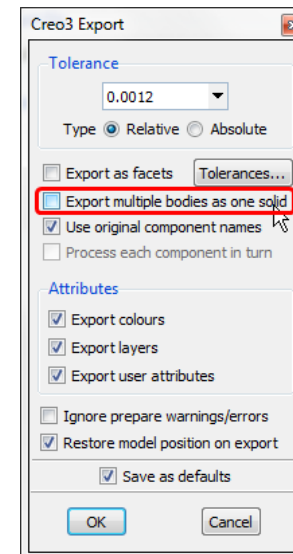
- Import of PLMXML assembly
 - Colour, layer & label
 - Material properties

Name	Type
ARR00855801.plmxml	PLMXML File
ARR00855806_1.jt	JT File
ARR00855808_1.jt	JT File
ARR00855810_1.jt	JT File
ARR00855812_1.jt	JT File
ARR00855814_1.jt	JT File
ARR00855816_1.jt	JT File
ARR00855818_1.jt	JT File
ARR00855820_1.jt	JT File
ARR00855822_1.jt	JT File
ARR00855824_1.jt	JT File
ARR00855826_1.jt	JT File



Creo 3.0 Export

- New export to native Creo 3.0 .prt file
 - Some restrictions:
 - Only parts (.prt) supported in this release, assembly export planned for future.
 - Assembly or multi-solid models exported as sub-folder of multiple .prt files, one per solid
 - Earlier versions of Creo not supported, only 3.0
 - New option to export all solids as a single part



Material Property Import

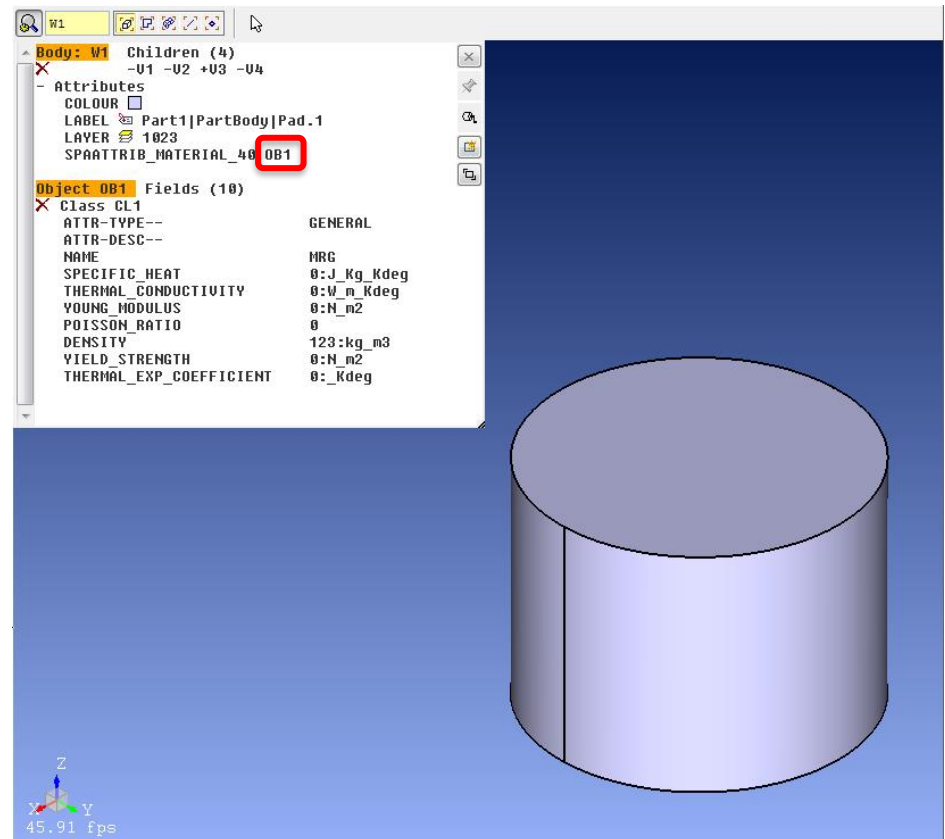
- Material property import from:

- CATIA V5
- NX
- Creo
- JT/PLMXML

- View properties via probe tool

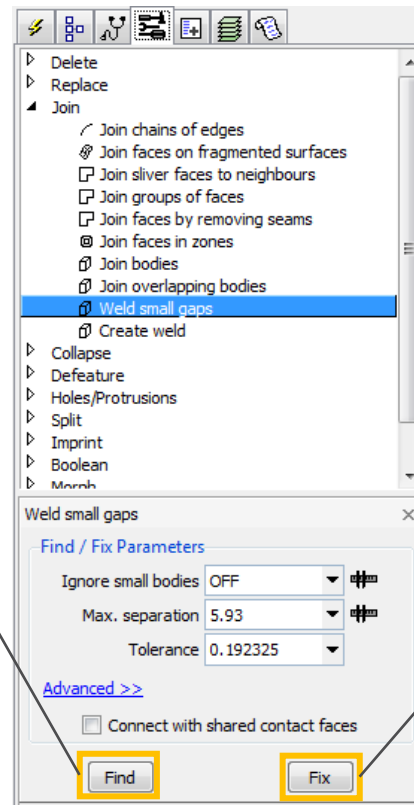
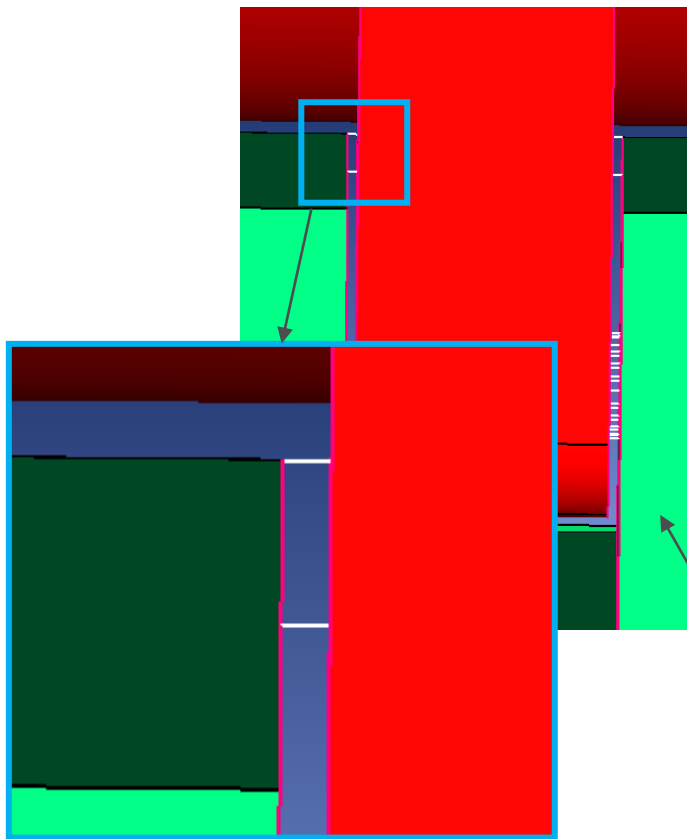
- Double-click attribute

- Available properties varies with system

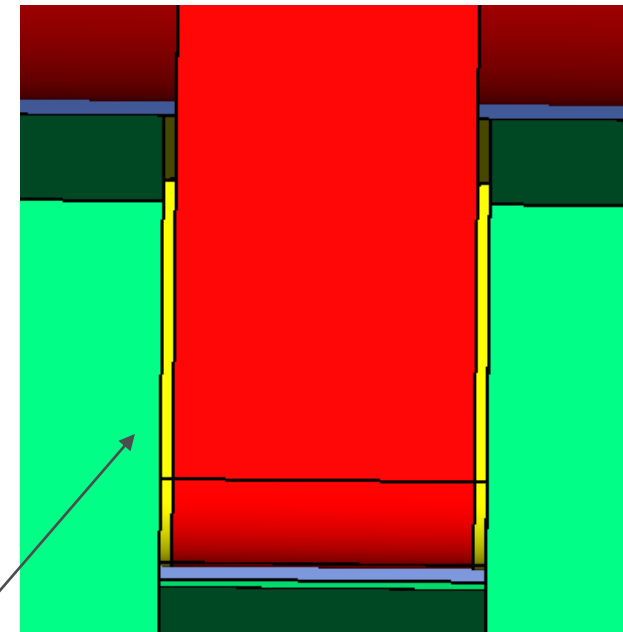


Improved Welding tool

- New “Weld small gaps” tool
 - Can now “Find” gaps to weld before “Fix”
 - Potential weld geometry highlighted in white

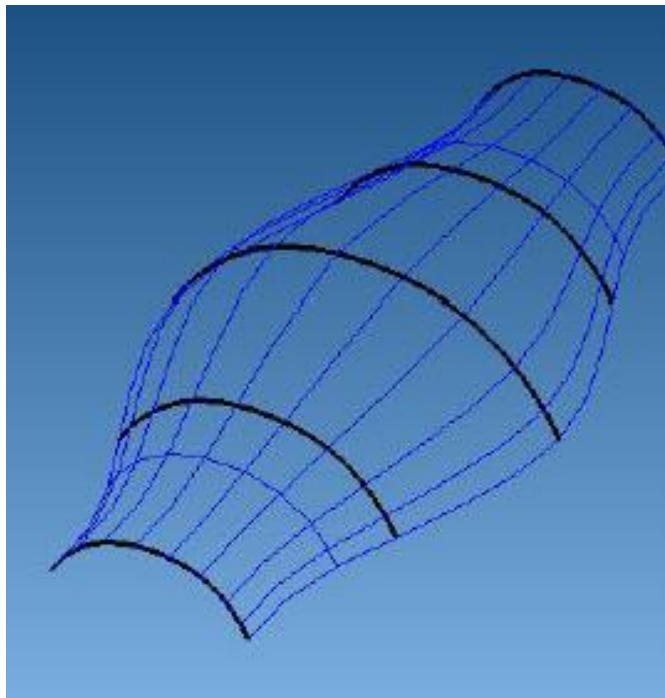


Resulting weld bodies in yellow

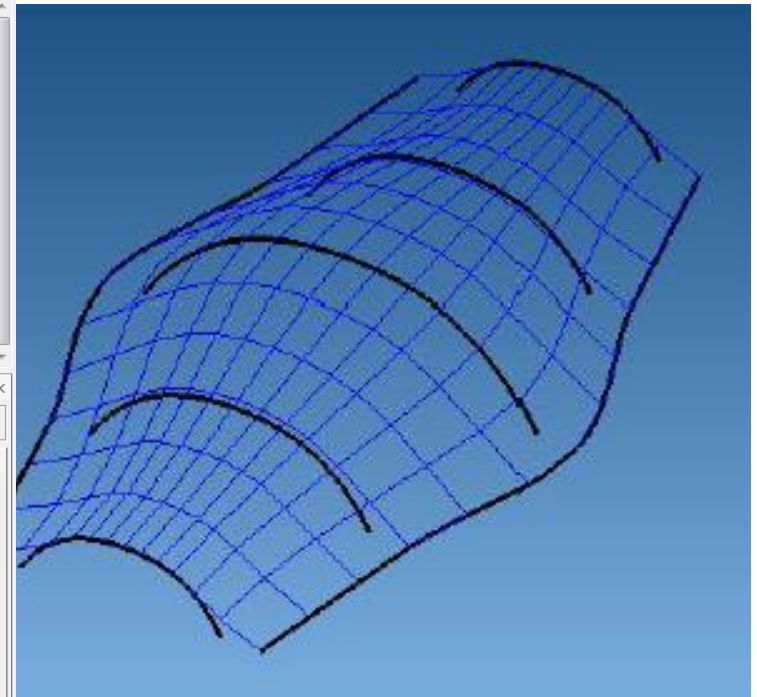
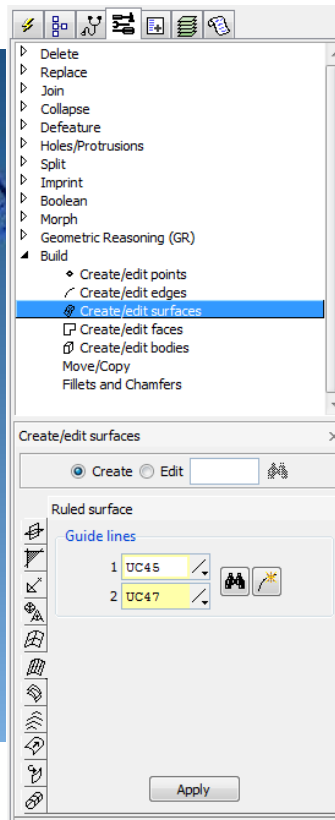


Build Tools

- Lofted surface creation with guide rails
 - 1 or 2 guide rail curves can now control lofted surface creation



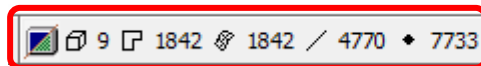


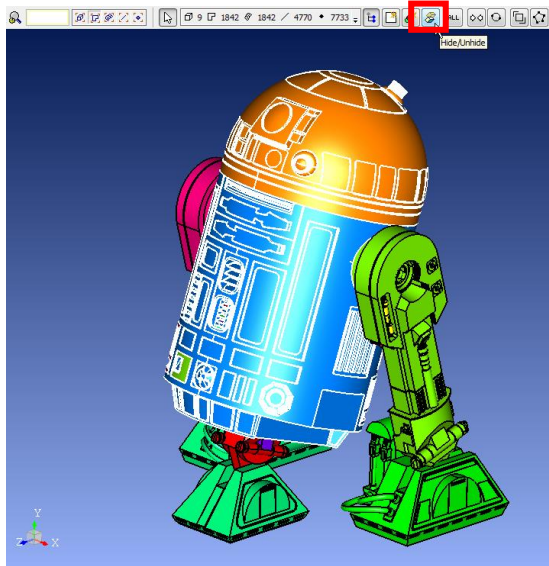
No guide rails



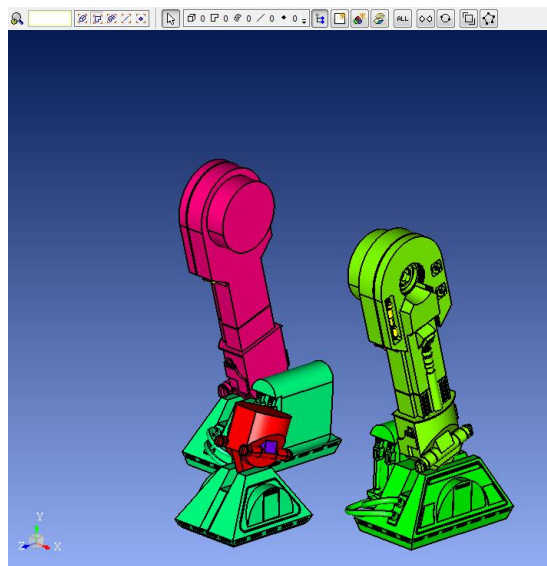
With guide rails

New Hidden Part Display Mode

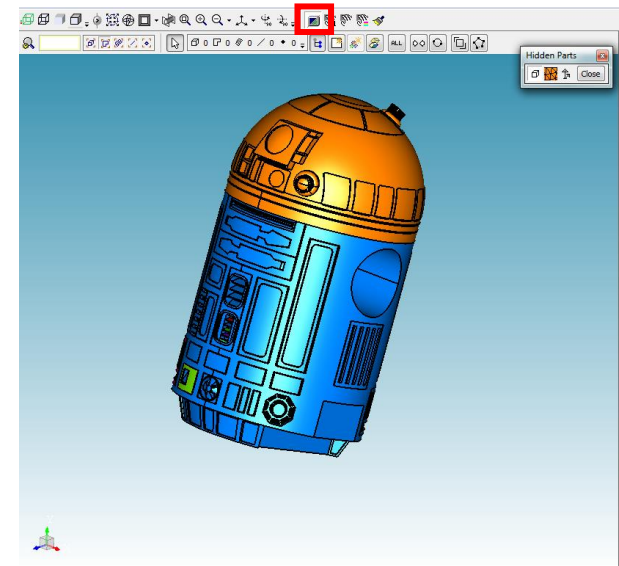
- Display mode shows hidden parts
 - Background colour indicates hidden mode
 - Switch between normal and hidden modes with 
 - Un-hide selected entities with <ctrl-h> or 
 - Entity counter shows hidden parts 



Hide selected entities



Entities hidden



Switch to hidden view mode

Select “Similar” Bodies

- New option in model tree – body view
 - Pick one body, then auto-select similar bodies
 - Useful in gross simplification of large multi-solid models

